

Upgrade your practice with the **BEST** panoramic implant planning tool available

- Purchase a **NEW** OP200 D digital panoramic or OC200 D digital pan/ceph and receive the best 2D implant planning tool Volumetric Tomography (VT) absolutely free.

That is a **\$20,000** value for one of the best implant planning tools on the market.

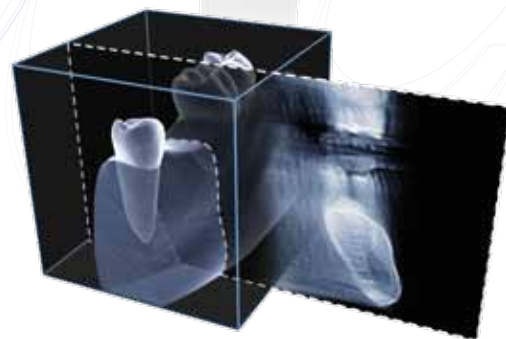
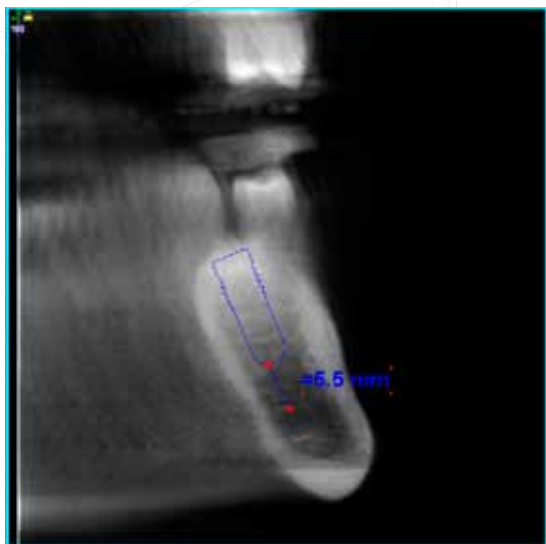
**Offer valid from April 1, 2010 through June 30, 2010*

**Offer not valid in conjunction with other promotional offers*



Orthopantomograph®
OP200 D

VT - An Effective and Affordable
Alternative to Cone Beam!



With 256 cross-sectional slices we make sure you have the view you are looking for

Visit www.vt-cube.com for an interactive demo

Instrumentarium Dental Inc.
1245 W. Canal Street
Milwaukee, Wisconsin 53233
U.S.A
Tel. + 1 800 235 8854, Fax +1 414 481 8665
www.instrumentariumdental.com

